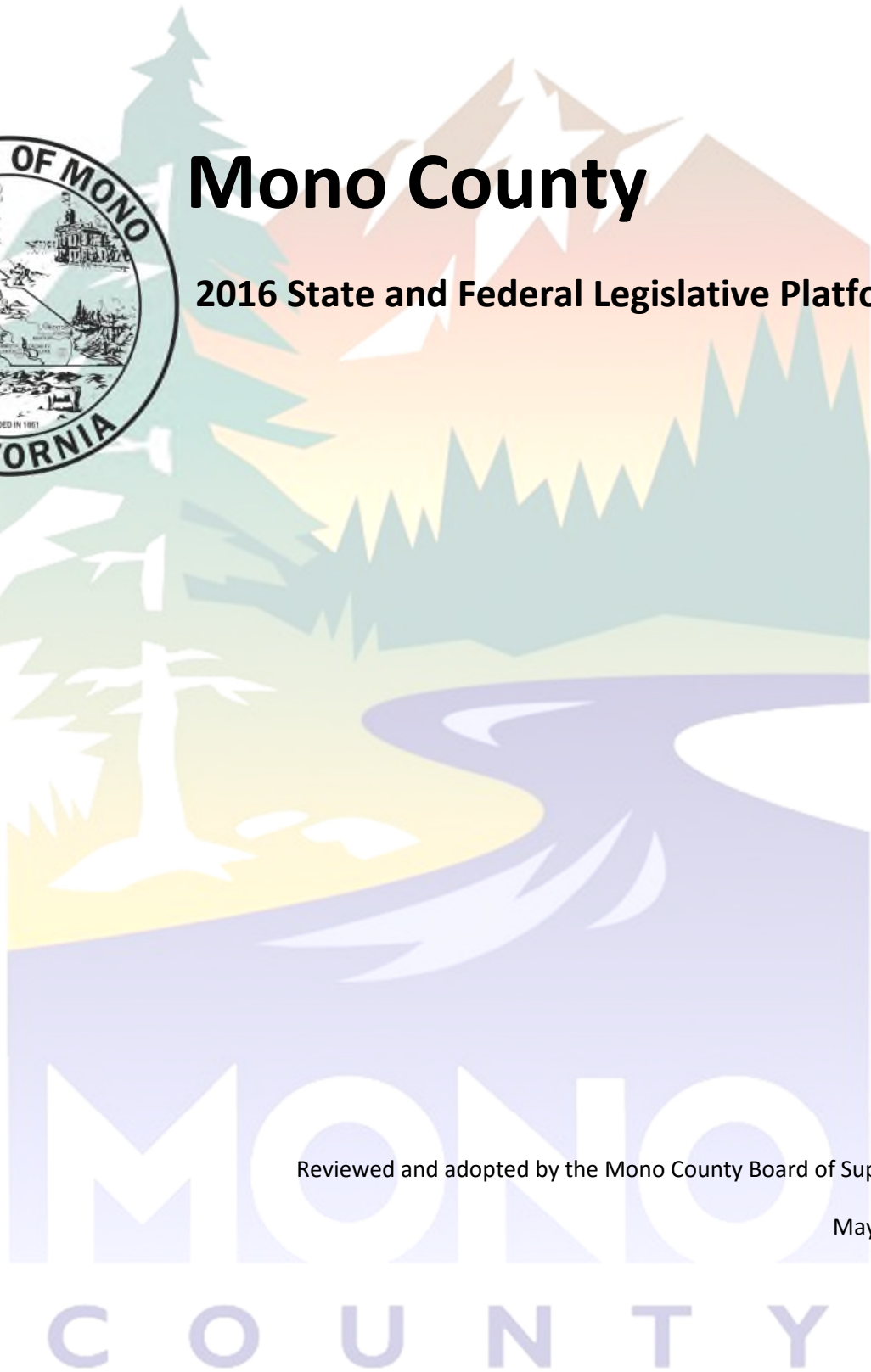




# Mono County

## 2016 State and Federal Legislative Platform

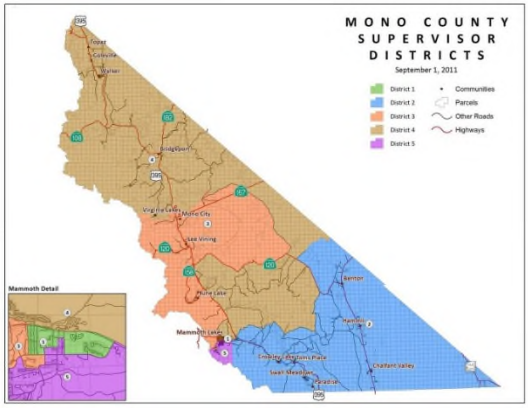


Reviewed and adopted by the Mono County Board of Supervisors

May 3, 2016

# Mono County Board of Supervisors

- Larry Johnston ..... District 1
- Fred Stump ..... District 2
- Tim Alpers..... District 3
- Tim Fesko ..... District 4
- Stacy Corless..... District 5



Leslie L. Chapman  
County Administrative Officer  
PO Box 696  
Bridgeport, CA 93517  
Tel: (760) 932-5414  
Email: [lchapman@mono.ca.gov](mailto:lchapman@mono.ca.gov)

## Table of Contents

	Page No.
Introduction .....	4
General Guidelines.....	6
State Priorities.....	7
Protect County Revenue Sources .....	7
Encourage Regulation Relief/Reform .....	7
Natural Resources, Public Lands & Agriculture .....	7
Public Safety & Criminal Justice .....	8
Transportation .....	9
Administrative Support & Fiscal Services .....	9
Health and Human Services .....	10
Federal Priorities.....	11
Support Funding/Program Preservation.....	11
Natural Resources, Public Lands & Agriculture .....	12
Endangered Species .....	14
Public Safety & Criminal Justice .....	14
Transportation .....	14
Health Reform.....	15
County Attractions .....	16
Elected Officials.....	18

## Introduction

Mono County, California, is a rural county situated between the crest of the Sierra Nevada Mountains and the California/Nevada border. Accessed by state-designated Scenic Byway US Highway 395 which weaves its way north-south, Mono County is 108 miles in length, and has an average width of only 38 miles. With dramatic mountain boundaries that rise in elevation to over 13,000 feet, the county's diverse landscape includes forests of Jeffrey and lodgepole pine, juniper and aspen groves, hundreds of lakes, alpine meadows, streams and rivers, and sage-covered high desert. The county has a land area of 3,030 square miles, or just over 2 million acres, 94% of which is publicly owned. Much of the land is contained in the Inyo and Humboldt-Toiyabe National Forests, as well as the John Muir and Ansel Adams Wilderness areas. As a result, Mono County offers vast scenic and recreational resources, and has unsurpassed access to wilderness and outdoor recreation and adventure.



Chris Tinker/Mono County Tourism/ Mono Lake

The county is home to, and named after, Mono Lake, which is a large high-desert saline lake with intriguing limestone tufa formations, and is a vital habitat for millions of migratory and nesting birds. Mono Lake is just one of the reasons that Mono County was listed in the "Top 10 U.S. Destinations to Visit" in 2013 by the pre-eminent travel guide publisher, *Lonely Planet*. Another highlight is the historic

gold rush town of Bodie, which during its heyday in the late 1800's was home to as many as 10,000 people, and is now maintained as a state park in a condition of "arrested decay" for the public to come and enjoy. Other natural wonders accessed in Mono County include Devils Postpile National Monument, one of the world's finest examples of columnar basalt, and the headwaters of the Owens and Middle Fork San Joaquin Rivers, two of the state's most important watersheds. Yosemite National Park's eastern entrance at Tioga Pass is only 12 miles from Lee Vining and Mono Lake.

Mono County has several small towns and charming villages, each with its own scenic beauty, year-round recreational opportunities, natural and historical attractions, and unique characteristics. The County seat is proudly located in Bridgeport, where the original 1881 courthouse is the second oldest in the state to be in continuous use. The only incorporated town in the county is



Alekos McKee/Mono County Tourism/ Bodie

Mammoth Lakes, which is located at the base of world-renowned Mammoth Mountain Ski Area, with a summit of 11,053 feet, over 3500 skiable acres, 28 lifts, and an average of 400 inches of snowfall annually. Approximately 7,500 people reside in the Mammoth Lakes area year-round, but during the peak winter season, the population swells to over 35,000 when visitors from around the state, country, and world come to ski, snowboard, and take part in many other winter activities. The sister resort, June Mountain, just 20 miles north of Mammoth, offers uncrowded, wide-open slopes and a more peaceful, family-friendly alternative to busier ski areas.



Summer, however, is when Mono County really shines. The region offers countless miles of alpine hiking, superb trout fishing at dozens of well-stocked lakes, streams and rivers, kayaking, cycling, horseback riding, golfing, and endless warm-weather adventures. Photographers flock to the county in September and October when it is almost impossible to take a bad photo of the fall color that lights up the Eastern Sierra landscape. *Sunset Magazine* named Mono County one of the “Top 5 places to Hike” in autumn and *TravelAndLeisure.com* listed Mono County as one of “America’s Best Fall Color Drives.” A wide variety of lodging, restaurants, and shops are available throughout the county, and commercial air service to Mammoth Yosemite Airport, just a 10-minute drive from the Town of Mammoth Lakes, is accessible from Los Angeles, San Francisco, and San Diego on Alaska and United Airlines throughout the winter, and from Los Angeles in summer and fall.



Alicia Vennos/Mono County

## State and Federal General Guidelines

The Mono County Board of Supervisors supports the general guidelines set forth below. County staff will apply these guidelines in evaluating State and Federal legislation, as well as executive and regulatory actions. It is the Board's objective to implement these guidelines.

To support the County's service to the community, the County should:

- Support legislative and budget efforts that protect and/or enhance local government revenues, maximize the County's access to state and federal funding sources, and/or increases local funding flexibility;
- Oppose any effort to balance the state budget through the taking of local government resources;
- Support legislation that protects the County's quality of life, its diverse natural resources, and preserves the essence and history of the County;
- Support legislation that provides tax and funding formulas for the equitable distribution of state and federal monies while opposing attempts to decrease, restrict, or eliminate County revenue sources;
- Support legislation and budget action which provides additional and continuing funding for local road infrastructure, including complete street features;
- Oppose legislative and administrative actions which would create federal unfunded mandates and/or preempt local decision making authority;
- Support legislation that realigns governmental services in such a manner as to improve the delivery of services and make government more accountable to the people;
- Support the promotion of tourism, filming, and a diversified local economy in the Eastern Sierra in order to achieve strong economic growth and prosperity;
- Continue to support legislation that honors our veterans for their service to our country;
- Support efforts that further the strategic directions outlined in the County's Strategic Plan;

## State Priorities

1. **Protect County Revenue Sources** – Many County programs are at risk due to the instability of State and Federal funding. The Board supports efforts to sustain funding enabling continuation of critical programs for Mono County’s constituents.
2. **Encourage Regulation Relief/Reform** – Mono County applauds California’s efforts to protect the environment, the Board supports efforts to achieve responsible regulation relief in the following areas.
  - a. Continue to provide regulatory relief to rural jurisdictions from statewide solid waste and recycling mandates when recycling infrastructure does not yet exist and causes significant transportation costs and emissions. Provide funding for the siting and development of recycling infrastructure, and/or develop policies within state agencies such as Caltrans for the re-use of materials (glass cullet, wood chips) when generated in rural areas.
  - b. Support legislation regarding California Air Resources Board (CARB) compliance to assist rural counties with the costs associated with State mandate compliance.
3. **Natural Resources, Public Lands and Agriculture**
  - a. **Sustainable Funding for State Parks** – Continue to support measures to sustain our State parks for the continued enjoyment of visitors and local residents. Closure or underfunding of these parks would result in a significant negative economic impact on our County as tourism is one of our most important economic drivers.
  - b. **Protect our Communities from Forest Fires and Promote Forest Health** – Support a balanced approach to fuels management that considers air quality and other health related issues within the Great Basin Unified Air Pollution Control District (GBUAPCD).
  - c. **Ensure full funding of Department of Fish and Wildlife Hatchery and Inland Fisheries Program (AB 7- 2006)** – In 2006, AB 7 dedicated by law one third of all sport fishing license fees to be used for adequate stocking of Department of Fish and Wildlife Hatcheries. Beyond the funding dedication, AB 7 dictated the size of fish to be stocked. Recent DFW actions, as well as state budget actions, have reduced the size of the stocking fish and not fully directed the fee funding to this program. Mono County supports the original intent including all of the funding being directed to the hatchery program and the fish size as described in the original legislation.

- d. **Support Bio-energy Action Plan Development** – We encourage the various state agencies involved to continue evolving this field of work to produce cleaner, more affordable technology based on sustainable and healthy forestry principles in a manner that benefits rural Sierra economies. In particular, Mono County has encouraged state agencies, such as the Sierra Nevada Conservancy (SNC) and California Energy Commission (CEC) to provide funding for project scoping and planning.
- e. **Support legislation that promotes, protects, or facilitates the sustainability of our local agriculture** – Mono County agriculture is an important local economic driver. It provides jobs and contributes to the open-space landscape that draws visitors. Reinstating Williamson Act subventions and continuing to develop alternative funding measures, such as the Strategic Growth Council’s Sustainable Agricultural Lands Conservation Program.

#### 4. Public Safety and Criminal Justice

- a. **Marijuana** – As new legislation to regulate medical marijuana continues to evolve and with potential legalization efforts, advocate for local control, taxation, and funding for addressing the environmental impacts of illegal marijuana cultivation.
- b. **State Realignment & Cost-Shifts** – Continue to ensure successful implementation of the broad array of programs transferred to county jurisdiction under the 2011 Public Safety Realignment, including appropriate distribution of AB 109 funding. Support state policy changes that will allow for greater administrative and program flexibility for County programs associated with this shift of responsibility.
- c. **Rural Fire Districts** – The population of Mono County is highly rural and dependent upon voluntary associations that provide basic emergency services. These volunteer fire districts provide services to residents and tourists, and they are often the first responders to accidents. Support relief for rural fire districts.



## 5. Transportation and Infrastructure

- a. **Transportation Funding** – Urge our legislators to take decisive action to find a long-term solution to California’s transportation funding crisis, including sustainable funding sources for local roads and related infrastructure.
- b. **State Highway Access** – Mono County supports budget policy and legislation to fund rehabilitation of the Bodie Road (Highway 270) that provides access to Bodie State Park and to facilitate early Sierra Pass openings (including Highways 120 and 108).
- c. **Support broadband deployment through the funding of infrastructure projects and grant programs, allocation of resources to broadband planning, advisory, or support oriented organizations** – Mono County is a rural California county in which some of our communities and constituents still lack access to high-speed Internet. Although the Digital 395 Project improved the region, Mono County communities and residents still face barriers to connectivity. Having access to state funds is critical as infrastructure projects in much of the area are typically cost prohibitive and do not yield a significant enough return based on the small population.
  - i. Support legislation that provides funding for infrastructure projects and adoption/education efforts.
  - ii. Advocate for programs and efforts that move to improve the accuracy of metrics used to represent the current state of broadband in Mono County. Maintain an internal set of metrics based on best available information and knowledge.
  - iii. Advocate for continued representation through the California Advanced Services Fund, and other agencies as appropriate.

## 6. Administrative and Fiscal Services

- a. **Support resources for improving county record keeping services and election administration and monitor legislation that may impact the following:**
  - i. Recording fees and process, and recorded documents;
  - ii. Vital statistic fees and process;
  - iii. Public records;
  - iv. Unfunded mandates;
  - v. Vote-by-mail, voter registration, election management systems, elections process, and election equipment;

- vi. Funding for records preservation (such as Board of Supervisors historic records);
  - vii. Funding for modernization of elections equipment;
- b. **Support legislation to authorize vote-by-mail ballot elections** for rural counties.
- c. **Support the full funding of all Payment in Lieu of Taxes (PILT)** – Support legislation and budget efforts that continue to maximize the PILT revenue to counties and continue full funding of PILT without restrictions beyond the current authorization.

## 7. Health and Human Services

- a. **Ensure State and Federal Healthcare Reform has equitable funding formulas for rural counties** – Affordable Care Act (ACA) implementation began in 2014, and it is vital that local government funding streams reflect equitable distribution formulas to service our rural constituents. Securing adequate funding to sustain health care reform measures is important to Mono County. Key issues include Medi-Cal expansion and funding for these mandates and continuation of 1991 realignment allocation/amounts.
- b. **Support the streamlining of the Medi-Cal administration and improve access to health coverage for uninsured families.**
- c. **Support greater federal and state resources for identifying and resolving cases of abuse and neglect of elder and dependent adults.** This should include financial abuse of this vulnerable population, and tracking the incidence of elder abuse and neglect in order to inform policy responses.
- d. **Support the establishment of a Foster Parent and Kinship Care, Retention, and Support fund to be administered through local child welfare services (CWS) agencies** that would be dedicated to the recruitment, retention, and support of relative caregivers and licensed foster parents so that they may provide stable, loving homes for children in the foster care system.
- e. **Support the state and federal resources to increase statewide capacity in the Adult Protective Services (APS) program to protect and serve seniors and dependent adults who are victims of abuse and neglect.** Specifically providing additional resources for a statewide training system for APS staff, and supporting staffing in the California Department of Social Services to provide leadership and support to county APS programs.

## Federal Priorities

1. **Support Funding/Program Preservation** – Support legislative, regulatory, and budget efforts that protect and/or enhance local government revenues, maximize the County's access to federal funding sources, and/or increase local funding flexibility. Oppose legislative and administrative actions that would create federal unfunded mandates and/or preempt local decision making authority.
  - a. **Support full funding of the Secure Rural Schools program** – These funds are critical to Mono County as they provide funding for Mono County Office of Education programs as well as supporting road maintenance to ensure students can get to and from school on County roads.
  - b. **Support the full funding of all Payment in Lieu of Taxes (PILT)** – Support legislation and budget efforts that continue to maximize the PILT revenue to counties and continue full funding of PILT without restrictions beyond the current authorization.
  - c. **Support federal funding for Housing and Economic Development Programs** – Support the highest possible funding level for key federal housing and economic development programs, including the Community Development Block Grant (CDBG).
  - d. **Support broadband deployment through the funding of infrastructure projects and grant programs, allocation of resources to broadband planning, advisory, or support oriented organizations** – Mono County is a rural California county in which some of our communities and constituents still lack access to high-speed Internet. Though improving in the region through the Digital 395 Project, Mono County communities and residents still face barriers to connectivity. Having access to federal funds is critical, as infrastructure projects in much of the area are typically cost prohibitive and do not yield a significant enough return based on the small population.
    - i. Support legislation that provides funding for infrastructure projects and adoption/education efforts.
    - ii. Advocate for programs and efforts that move to improve the accuracy of metrics used to represent the current state of broadband in Mono County. Maintain an internal set of metrics based on best available information and knowledge.

- iii. Support funding for broadband infrastructure development, service delivery, local access and adoption strategies through agencies such as the Federal Communications Commission (FCC).
  - e. **Support legislation that promotes, protects, or facilitates the sustainability of our local agriculture** – Mono County agriculture is an important local economic driver, provides jobs, and contributes to the open-space landscape that draws visitors.
  - f. **Support Economic Development Resources including:**
    - i. Maintain and support access to small business capital for local business development through the Small Business Administration.
    - ii. Support economic development efforts that augment and promote business retention and expansion, as well as to create an environment conducive to new business attraction.
    - iii. Support efforts to attract and encourage commercial filming opportunities to the region.
- 2. **Natural Resources, Public Lands, and Agriculture** – Support legislation that promotes agriculture and that protects the County’s quality of life, its diverse natural resources, and preserves the essence and history of the County, along with legislation that provides adequate funding for stewardship of our public lands.
  - a. **Sustainable Funding for Federal Parks** – Continue to support measures to sustain our Federal parks for the continued enjoyment of visitors and local residents. Closure or underfunding of these parks would result in a significant negative economic impact on our County as tourism is one of our most important economic drivers.
  - b. **Summer Recreation** – Support continued expansion of summer recreation on June Mountain and Mammoth Mountain and encourage additional infrastructure for recreational use.
  - c. **Land Exchange** – Support and encourage the Forest Service to consummate the pending land exchange with Mammoth Mountain.
  - d. **Forest Fuels Reduction and Management Efforts** – 94% of Mono County is publically owned, and fuels reduction is a major concern for the County and its communities. Support a balanced approach to fuels management that considers

air quality and other health related issues within the Great Basin Unified Air Pollution Control District (GBUAPCD).

- e. **Land Management Directives** – Support Mono County’s tourism economy by ensuring funding, programs, and management directives for federal land agencies (including the Land & Water Conservation Fund) that facilitate the planning, building, and maintenance of infrastructure for sustainable recreation, travel, and commercial film permitting on public lands.
- f. **Sustainable Fishing** – Support the funding of efforts to bolster sustainable fishing and other recreational activities such as funding for the Lahontan Cutthroat Trout Recovery Program.
- g. **Invasive Species** – Support control and mitigation for the spread of invasive species to protect, conserve, and restore public and private lands.
- h. **Support Biomass Project Development** – Support legislation that encourages the US Forest Service (USFS) to continue actively promoting and assisting with biomass project development.
- i. **Alternative Energy** – Support local efforts to develop alternative energy sources including but not limited to environmentally appropriately scaled biomass, solar, wind, and geothermal power generation while ensuring infrastructure does not degrade the County’s quality of life, diverse natural resources, or essence and history.
- j. **Devils Postpile National Monument Legislative Requests** – Support legislation to authorize a boundary adjustment request, and to designate a portion of the Middle Fork San Joaquin River as Wild & Scenic, as described in Devils Postpile National Monuments 2015 Management Plan.

3. **Endangered Species** – Support a balanced approach of the implementation of endangered species regulation with impacts to the economy and communities of Mono County. Mono County is fortunate to have a rich natural heritage that should be conserved, and it supports the need to protect and recover imperiled species. These conservation measures must be weighed and balanced against impacts to the fragile rural economy and local communities, and every effort must be made to protect private property rights and avoid detrimental impacts to County residents.

a. **Sage Grouse Conservation** – Support continued participation by federal agencies in a collaborative process to address Bi-State Sage Grouse conservation efforts.

4. **Public Safety & Criminal Justice**

a. **Support full funding of Byrne Justice Assistance Grants** – Support the preservation of funding levels for existing safety programs such as the Byrne Justice Assistance Grant (Byrne/JAG) Program and oppose efforts to reduce or divert funding away from these programs.

5. **Transportation and Infrastructure**

a. **Ensure that federal transportation formulas support rural road infrastructure** – Mono County has concerns regarding the continued implementation of the federal surface transportation reauthorization program. Mono County relies on the network of state highways and locally maintained roads to link residents to essential services. Transportation funding formulas should provide funding protections or guarantees for California’s rural transportation system and reflect that rural counties lack viable means to fund larger projects that provide statewide benefit. We should advocate for formulas that distribute federal funds to support local transportation priorities.

b. **Support efforts to protect the Highway Trust Fund** and support programs that provide funding for local roads, bridges, and transit initiatives including pedestrian and bicycle systems, and other multi-modal transportation programs.

c. **Federal Highway Access** – Mono County supports budget policy and legislation that funds infrastructure such as roads on Federal land with access to popular destinations including national parks and monuments.

## 6. Health Reform

- a. **Ensure that Affordable Care Act (ACA) funding is maintained for local governments** – Support the Prevention and Public Health Fund of the ACA, the nation’s first dedicated mandatory funding stream for public health and prevention activities, which supports Mono County health care services to underserved residents.
- b. **Oppose efforts to reduce federal funding for Medicaid administration or benefits.**
- c. **Adult and Disability Services:**
  - i. Support appropriation of \$100 million authorized under the Elder Justice Act to support state and county adult protective services programs.
  - ii. Support restoration of full funding for the Social Services Block Grant, which in California is used primarily to augment county and state funded in-home supportive services for elderly and disabled persons, and to coordinate services to children with disabilities.



# MONO COUNTY

CALIFORNIA'S EASTERN SIERRA



Lundy Canyon

## HIDDEN TREASURES IN PLAIN SIGHT

**MONO COUNTY** is a land of dramatic mountain backdrops, high plains, and countless clear lakes, streams, and rivers. Over 3,000 square miles in size, Mono County is well-known for its vast scenic and recreational resources. Much of this land is contained in the Inyo and Toiyabe National Forests, and the Ansel Adams, John Muir, and Hoover wilderness areas. Access to hiking, fishing, biking, skiing, horseback riding, fall colors, uncrowded campgrounds, amazing music festivals, and much more is found just off of scenic US 395, which stretches the length of the county, 120 spectacular miles from Bishop, California, to the Nevada border.

## TOP ATTRACTIONS

**YOSEMITE NATIONAL PARK** – Drive California's highest pass – just 12 miles from Lee Vining to Yosemite's east entrance – to witness ten-story waterfalls, enjoy world-class rock climbing and hiking, and more (summer only).  
Contact: [www.nps.gov/yose](http://www.nps.gov/yose) or 209-372-0200. For bus service: [www.Yarts.com](http://www.Yarts.com).

**BODIE STATE HISTORIC PARK** – Bodie is preserved in a state of "arrested-decay," so keep an eye out for spirits roaming the once-wild streets of this genuine gold-mining ghost town.  
Contact: [www.parks.ca.gov](http://www.parks.ca.gov) or [www.BodieFoundation.org](http://www.BodieFoundation.org) or 760-647-6445.

**MONO LAKE** – Paddle a canoe around volcanic islands (don't worry, they're dormant!) and tufa towers, which are natural limestone formations created by the ancient lake's salinity.  
Learn more at Mono Basin Scenic Area Visitor Center, 760-647-3044, or the Mono Lake Committee, [www.MonoLake.org](http://www.MonoLake.org) or 760-647-6595.

**DEVILS POSTPILE NATIONAL MONUMENT** – Located near Mammoth Lakes, Devils Postpile is the world's finest example of columnar basalt formations: 760-924-5500.

### Mono County Tourism

**Alicia Vennos**

[avennos@mono.ca.gov](mailto:avennos@mono.ca.gov)

1-800-845-7922

760-924-1743 Office

### East River PR

**Katie Shaffer**

[katie@eastriverpr.com](mailto:katie@eastriverpr.com)

530-214-8790 Office

530-559-5330 Cell

## MONO COUNTY

Towns Communities

**BENTON HOT SPRINGS** — Soak in natural hot springs that are temperature regulated in this historic stagecoach station.

**BRIDGEPORT** — Home of the county seat, the classic whitewashed wooden courthouse has been in use since 1880. Just outside of Bridgeport, Twin Lakes, Virginia Lakes and Bridgeport Reservoir offer fishing and hiking all summer long.

**CONVICT LAKE / MCGEE CREEK** — Dramatically situated under towering Mt. Morrison, Convict Lake is loved by anglers, hikers, and wedding parties! Catch wildflowers or fall colors at McGee Creek Canyon.

**CROWLEY LAKE** — Fishing season opener's home base, this expansive lake offers world-class trout fishing.

**JUNE LAKE** — Tucked away at the base of 10,909-ft Carson Peak, June Lake is a scenic mountain hideaway. Well known for trout fishing and brilliant fall colors, the June Lake Loop is a snowy retreat in winter. June Mountain Ski Area offers free lift tickets all winter for kids age 12 and under.

**LEE VINING** — Overlooking dramatic Mono Lake, Lee Vining is the gateway town to Yosemite National Park – just 12 breathtaking miles up Tioga Pass Road.

**MAMMOTH LAKES** — Mammoth Mountain Ski Area consistently ranks as one of the top winter sports destinations in North America. In the town of Mammoth Lakes, you'll find quaint shops, gourmet restaurants and accommodations from cozy cabins to four-star luxury hotels.

**ROCK CREEK / TOM'S PLACE** — Famous for the beautiful Little Lakes Valley hiking trail, fall colors, and home-made pie.

**TOPAZ** — Home to Topaz Lake, which boasts a nine month fishing season (and big cash derby!), and a Nevada casino.

**WALKER AND COLEVILLE** — Ranch towns in the northern part of Mono County, Walker and Coleville host California's only ATV/UTV Jamboree!



## GETTING TO CALIFORNIA'S EASTERN SIERRA

### FLY TO THE EASTERN SIERRA!

Daily air service to Mammoth Yosemite Airport (MMH) is available on Alaska Airlines and/or United Airlines from Los Angeles, San Francisco and San Diego.



### DRIVE

Mono County is within a scenic 5-7 hour drive from Los Angeles, San Francisco and Las Vegas. Northern Mono County is only 1.5 hours from Reno/Tahoe International Airport.

### DRIVING DISTANCES AND TIMES

Reno	2.5 hours	140 miles / 225 km
San Francisco	5.5 hours	250 miles / 402 km
Los Angeles	5.5 hours	330 miles / 531 km
Sacramento	4 hours	220 miles / 354 km
Las Vegas	5.5 hours	340 miles / 547 km
Yosemite Valley	2 hours	75 miles / 121 km

*All mileage and times are from Lee Vining, CA*



Mono Lake

## VISITOR AMENITIES

**LODGING** — With more than 140 hotels, motels, bed & breakfast inns, cabins and campgrounds, Mono County has a diverse lodging base—truly everything from deluxe spa hotels to rustic cottages and scenic RV parks.

**DINING** — All that fresh air and adventure will have visitors needing fuel. There are over 100 restaurants, cafes, pubs and bakeries to choose from throughout Mono County, with options ranging from traditional comfort food to delicious ethnic cuisine and fine dining.

**SHOPPING** — If you are looking for Macy's, you won't find it in Mono County. Our shopping experience is more about bait, gloves and woolly buggers! However, with approximately 125 stores to browse through, you'll find lots of intriguing shops, art galleries with Eastern Sierra-inspired visions, and Native American crafts and western wear that will bring out everyone's inner Wild West.

**WINTER 2016** — Kids 12 and under ski and snowboard FREE all winter at June Mountain, no restrictions!

## TOP EASTERN SIERRA ACTIVITIES

### SUMMER

Hiking and Backpacking  
Fishing and Camping  
Mountain Biking and Road Cycling  
Kayaking and Canoeing  
Stand-up Paddleboarding  
Rock Climbing  
Horseback Riding  
ATVs / Off-Highway Vehicles

### WINTER

Skiing and Snowboarding  
Cross Country Skiing  
Snowshoeing  
Snowmobiling  
Dog-Sledding  
Sledding and Tubing  
Ice Skating  
Ice Climbing

## 2016 EVENT HIGHLIGHTS

June Lake Winter Festival	June Lake	February 27-28
Mammoth Winter Biathlon	Mammoth Lakes	March 18-20
Eastern Sierra ATV/UTV Jamboree	Walker	June 14-18
Mono Basin Bird Chautauqua	Lee Vining	June 17-19
Mammoth Motocross	Mammoth Lakes	June 17-26
Old-Fashioned 4th of July	Bridgeport	July 1-4
June Lake Triathlon	June Lake	July 9
June Lake Loop Mountain Music Festival	Mammoth Lakes	July 29-31
Mammoth Festival of Beers & Bluesapalooza	Mammoth Lakes	August 4-7
Size Doesn't Matter Fishing Derby	Walker/Coleville	August 7-9
Friends of Bodie Day	Bodie	August 13
Founder's Day	Bridgeport	September 2-5
Autumn Beer Festival	June Lake	October 1

For the latest news, events info, FREE Visitor Guide, and Mono County Travel Blog – visit us online at [www.MonoCounty.org](http://www.MonoCounty.org) and on Facebook at [www.Facebook.com/VisitEasternSierra](http://www.Facebook.com/VisitEasternSierra).

**Elected State Representatives:**

Assembly member Frank Bigelow 5 <sup>th</sup> Assembly District State Capitol, Suite #6027 Sacramento, CA 94249-0005 Phone: (916) 319-2005 Fax: (916) 319-2105 Website: <a href="https://ad05.asmr.org/">https://ad05.asmr.org/</a>	Senator Tom Berryhill 8 <sup>th</sup> Senate District State Capitol, Room 3076 Sacramento, CA 95814 Phone: (916) 651-4008 Fax: (916) 651-4908 Website: <a href="http://berryhill.cssrc.us/">http://berryhill.cssrc.us/</a>
Governor Jerry Brown c/o State Capitol, Suite 1173 Sacramento, CA 95814 Phone: (916) 445-2841 Fax: (916) 558-3160 Website: <a href="http://gov.ca.gov/">http://gov.ca.gov/</a>	

**Elected Congressional Representatives:**

Senator Barbara Boxer United States Senate 112 Hart Senate Office Building Washington, D.C. 20510 Phone: (202) 224-3553 Fax: (202) 224-0454 Website: <a href="http://www.boxer.senate.gov/">http://www.boxer.senate.gov/</a>	Senator Dianne Feinstein United States Senate 331 Hart Senate Office Building Washington, D.C. 20510 Phone: (202) 224-3841 Fax: (202) 228-3954 Website: <a href="http://www.feinstein.senate.gov/">http://www.feinstein.senate.gov/</a>
Congressman Paul Cook 8 <sup>th</sup> Congressional District 1222 Longworth House Office Building Washington, DC 20515 Phone: (202) 225-5861 Fax: (909) 797-4997 Website: <a href="http://cook.house.gov/">http://cook.house.gov/</a>	



County of Mono  
Post Office Box 696  
Bridgeport, California 93517  
(760) 932-5410  
[www.mono.county.ca.gov](http://www.mono.county.ca.gov)

