



# Mono County

## 2018 State and Federal Legislative Platform



Reviewed and adopted by the Mono County Board of Supervisors

February 13, 2018

# Mono County Board of Supervisors

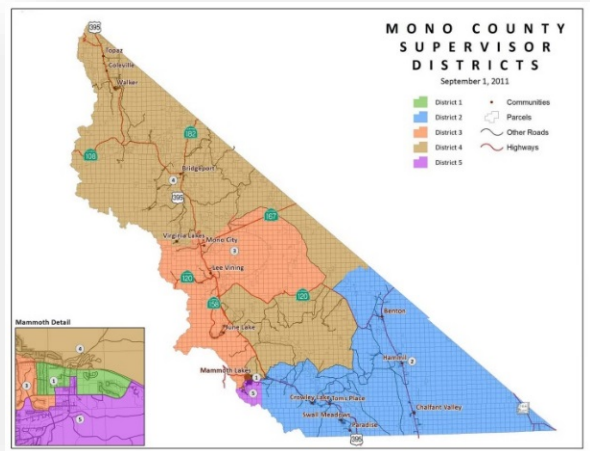
Larry Johnston .....District 1

Fred Stump .....District 2

Bob Gardner .....District 3

John Peters .....District 4

Stacy Corless .....District 5



Leslie L. Chapman  
County Administrative Officer  
PO Box 696  
Bridgeport, CA 93517  
Tel: (760) 932-5414  
Email: [lchapman@mono.ca.gov](mailto:lchapman@mono.ca.gov)

# Table of Contents

	Page No.
Introduction .....	4
General Guidelines.....	6
State Priorities.....	8
County Revenue Sources .....	8
Regulation Relief/Reform .....	8
Natural Resources, Public Lands & Agriculture .....	9
Public Safety & Criminal Justice .....	10
Transportation & Infrastructure .....	11
Administrative & Fiscal Services .....	12
Health and Human Services .....	13
Economic Development.....	14
Federal Priorities .....	15
Funding/Program Preservation.....	15
Natural Resources, Public Lands & Agriculture .....	16
Public Safety & Criminal Justice .....	18
Transportation & Infrastructure .....	19
Health Care Reform .....	20
Child Welfare.....	20
Immigration .....	20
Supplemental Nutrition Assistance Program.....	20
Older Americans Act.....	21
County Attractions .....	22
Elected Officials.....	24

## Introduction

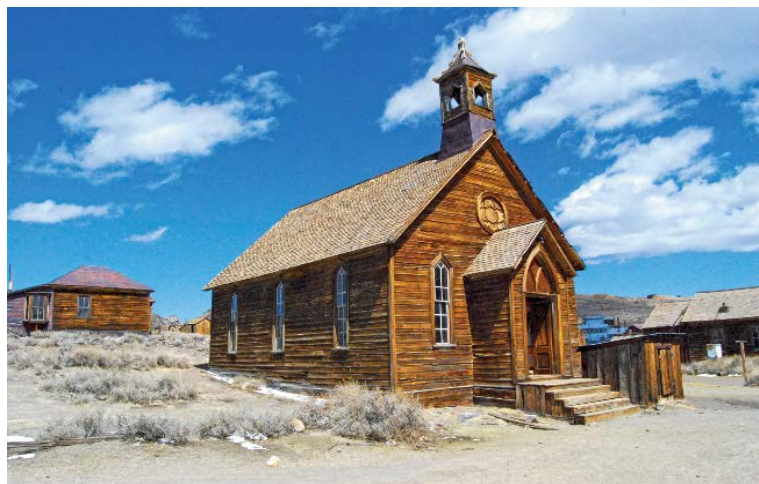
Mono County, California, is a rural county situated between the crest of the Sierra Nevada and the California/Nevada border. Accessed by US Highway 395 which weaves its way north-south, and is a state-designated Scenic Byway from its southern boundary all the way to Walker in the north, Mono County is 108 miles in length, and has an average width of only 38 miles. With dramatic mountain boundaries that rise in elevation to over 13,000 feet, the county's diverse landscape includes forests of Jeffrey and Lodgepole pine, juniper and aspen groves, hundreds of lakes, alpine meadows, streams and rivers, and sage-covered high desert. The county has a land area of 3,030 square miles, or just over 2 million acres, 94% of which is publicly owned. Much of the land is contained in the Inyo and Humboldt-Toiyabe National Forests, as well as the John Muir and Ansel Adams Wilderness areas. As a result, Mono County offers vast scenic and recreational resources, and has unsurpassed access to wilderness and outdoor recreation and adventure.



*Chris Tinker/Mono County Tourism/ Mono Lake*

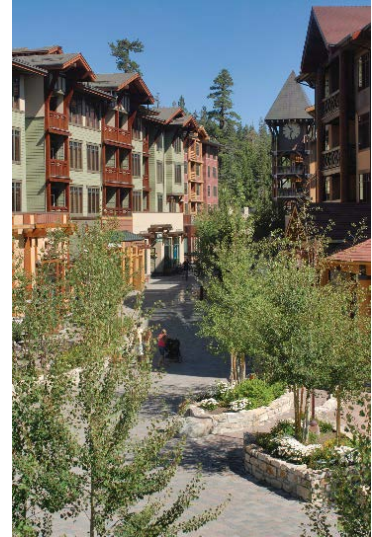
The county is home to, and named after, Mono Lake, which is a large high-desert saline lake with intriguing limestone tufa formations, and is a vital habitat for millions of migratory and nesting birds. Mono Lake is just one of the reasons that Mono County draws landscape photographers year-round. Another highlight is the historic gold rush town of Bodie, which during its heyday in the late 1800s, was home to as many as 10,000 people, and is now maintained as a State Historic Park with

about 200 buildings still standing as they were left, preserved in “arrested decay” for visitors to enjoy. Other natural wonders that attract people to Mono County include Devils Postpile National Monument, one of the world’s finest examples of columnar basalt, and the headwaters of the Owens and Middle Fork San Joaquin Rivers, two of the state’s most important watersheds. Yosemite National Park’s eastern entrance at Tioga Pass is only 12 miles from Lee Vining and Mono Lake.



*Alekos McKee/Mono County Tourism/ Bodie*

Mono County has several small towns and charming villages, each with its own scenic beauty, year-round recreational opportunities, natural and historical attractions, and unique characteristics. The County seat is proudly located in Bridgeport, where the original 1881 courthouse is the second oldest in the state to be in continuous use. The only incorporated town in the county is Mammoth Lakes, which is located at the base of world-renowned Mammoth Mountain Ski Area, with a summit of 11,053 feet, over 3500 skiable acres, 28 lifts, and an average of 400 inches of snowfall annually. January 2017 recorded historic amounts of snow, with 20.5 feet accumulating in Mammoth during that month alone. Approximately 7,500 people reside in the Mammoth Lakes area year-round, but during the peak winter season, the population swells to over 35,000 when visitors from around the state, country, and world come to ski, snowboard, and take part in many other winter activities. The sister resort, June Mountain, just 20 miles north of Mammoth, offers uncrowded, wide-open slopes and a more peaceful, family-friendly alternative to busier ski areas.



Mammoth Mountain Ski Area

Summer, however, is when Mono County really shines. The region offers countless miles of alpine hiking, superb trout fishing at dozens of well-stocked lakes, streams and rivers, kayaking, cycling, horseback riding, golfing, and endless warm-weather adventures. Photographers flock to the county in September and October when it is almost impossible to take a bad photo of the fall color that lights up the Eastern Sierra landscape. *Sunset Magazine* named Mono County one of the “Top 5 places to Hike” in autumn and *TravelAndLeisure.com* listed Mono County as one of “America’s Best Fall Color Drives.” A wide variety of lodging, restaurants, and shops are available throughout the county, and commercial air service to Mammoth Yosemite Airport, just a 10-minute drive from the Town of Mammoth Lakes, is accessible from Los Angeles, Burbank, San Francisco, and San Diego on Alaska and United Airlines throughout the winter, and from Los Angeles in summer and fall.



Alicia Vennos/Mono County

## State and Federal General Guidelines

The Mono County Board of Supervisors supports the general guidelines set forth below. County staff will apply these guidelines in evaluating State and Federal legislation, as well as executive and regulatory actions. It is the Board's objective to implement these guidelines.

To support the County's service to the community, the County should:

- Support legislative and budget efforts that protect and/or enhance local government revenues, maximize the County's access to state and federal funding sources, and/or increase local funding flexibility;
- Oppose any effort to balance the State budget through the taking of local government resources;
- Support legislation that protects the County's quality of life and diverse natural resources, while preserving the essence and history of the County;
- Support legislation that provides tax and funding formulas for the equitable distribution of state and federal monies while opposing attempts to decrease, restrict, or eliminate County revenue sources;
- Support legislation and budget action which provides additional and continuing funding for local road infrastructure, including complete street features;
- Oppose legislative and administrative actions which would create federal unfunded mandates and/or preempt local decision-making authority;
- Support legislation that realigns governmental services in such a manner as to improve the delivery of services and make government more accountable to the people;
- Support the promotion of tourism, recreation, filming, and a diversified local economy in the Eastern Sierra to achieve strong economic growth and prosperity;
- Continue to support legislation that honors our veterans for their service to our country;
- Support efforts that further the strategic directions outlined in the County's Strategic Plan; and

- Engage on any proposals to repeal or additionally alter the Affordable Care Act (ACA), which provides Mono County citizens the ability to obtain affordable health care.
- Support efforts to combat climate change.

## State Priorities

1. **Protect County revenue sources** – Many County programs are at risk due to the instability of State and Federal funding. The Board of Supervisors supports efforts to sustain funding enabling continuation of critical programs for Mono County’s constituents.
  
2. **Encourage regulation relief/reform** – Mono County applauds California’s efforts to protect the environment. The Board supports efforts to achieve responsible regulation relief in the following areas:
  - a. **Provide regulatory relief for solid waste operations** –
    - i. Continue to provide regulatory relief to rural jurisdictions from statewide solid waste and recycling mandates when recycling infrastructure does not yet exist and causes significant transportation costs and emissions.
    - ii. Provide regulatory relief from recycling and diversion mandates for waste that originates on Federal and Los Angeles Department of Water and Power (LADWP) lands. Large-scale projects and activities on those lands can dramatically impact the County’s diversion rate while circumventing the County’s regulatory authority.
    - iii. Provide funding for the siting and development of recycling infrastructure, and/or develop policies within state agencies such as Caltrans for the re-use of materials (glass cullet, wood chips) when generated in rural areas.
  
  - b. **Support CARB compliance legislation** – Support legislation regarding California Air Resources Board (CARB) compliance to assist rural counties with the costs associated with State mandated compliance.
  
  - c. **Support environmental processing legislation** – Support legislation that streamlines environmental processing, including the application of certain urban exemptions under the California Environmental Quality Act (CEQA) to rural communities.
  
  - d. **Support regulation of short-term rental online platforms** – Online short-term rental platforms are unregulated, leaving accountability and compliance issues to local jurisdictions. Mono County urges the legislature to support regulation of short-term rentals to ensure an even playing field with traditional commercial lodging, require accountability, provide for tax collection, and support compliance at the state and local levels.



- e. **Ensure adequate oversight of state requirements for commercial cannabis activities** – Mono County is concerned about the state’s allocation of resources for monitoring and inspection of commercial cannabis permits to ensure compliance with state requirements, particularly in rural areas like Mono County. Where oversight is delegated to local agencies, such as the Agricultural Commissioner, adequate funding should also be provided. Where oversight is retained by the state, state agency staff should have adequate on-the-ground presence to ensure accountability and compliance without increasing the burden on local jurisdiction staff.

### 3. Natural Resources, Public Lands and Agriculture

- a. **Support sustainable funding for State parks** – Continue to support measures to sustain our State parks, and the roads that access them, for the continued enjoyment of visitors and residents. Closure or underfunding of these parks would result in a significant negative economic impact on our County as tourism and recreation are our most important economic drivers.
- a. **Protect our communities from forest fires and promote forest health** – Support a balanced approach to fuels management that considers air quality and other health related issues within the Great Basin Unified Air Pollution Control District (GBUAPCD).
- b. **Support removal and utilization of dead and dying trees** – Support state and federal funding, as necessary and appropriate, for the continued removal and utilization of dead and dying trees due to invasive pest infestation consistent with Governor Brown’s October 2015 Emergency Proclamation. The removal of diseased trees is vital for the prevention of severe fire risk conditions, which ultimately protects public health and safety while reducing greenhouse gas emissions from wildfire and preserving the carbon sequestration capabilities of California’s forest lands.
- c. **Ensure full funding of Department of Fish and Wildlife Hatchery and Inland Fisheries Program (AB 7- 2006)** – In 2006, AB 7 dedicated by law one third of all sport fishing license fees to be used for adequate stocking of Department of Fish and Wildlife Hatcheries. Beyond the funding dedication, AB 7 dictated the size of fish to be stocked. Recent DFW actions, as well as state budget actions, have reduced the size of the stocking fish and not fully directed the fee funding to this program. Mono County supports the original intent including all of the funding being directed to the hatchery program and the fish size as described in the original legislation.

- d. **Support sustainable fishing** – Support the funding of efforts to enhance the fish population in Mono County including sustainable fishing, ongoing fish stocking, education for proper catch and release practices, protection of spawning waterways, and support of the California Department of Fish and Wildlife stocking of diploid trout in allowable waters.
- e. **Support bio-energy action plan development** – We encourage the various state agencies involved to continue evolving this field of work to produce cleaner, more affordable technology based on sustainable and healthy forestry principles in a manner that benefits rural Sierra economies. Mono County has encouraged state agencies, such as the Sierra Nevada Conservancy (SNC) and California Energy Commission (CEC) to provide funding for project scoping and planning.
- f. **Support legislation that promotes, protects, or facilitates the sustainability of our local agriculture** – Mono County agriculture is an important local economic driver. It provides jobs and contributes to the open-space landscape that draws visitors. Reinstatement of Williamson Act subventions and continue to develop alternative funding measures, such as the Strategic Growth Council’s Sustainable Agricultural Lands Conservation Program.
- g. **Support legislation and funding that eases the burden of implementing the Sustainable Groundwater Management Act, including creating necessary infrastructure in rural, sparsely populated areas** – The Sustainable Groundwater Management Act provides for local agencies to develop groundwater sustainability plans and, pursuant to those plans, sustainably manage groundwater resources. The funding mechanism for these activities provided in the law is for local agencies to impose fees on water users. Areas subject to the Act in Mono County are sparsely populated and primarily in agricultural production. Accordingly, very few individuals (less than a dozen) would have to bear the significant burden of funding compliance with the Act. This raises real concerns regarding the future of Mono County’s agricultural operations.

#### 4. **Public Safety and Criminal Justice**

- a. **Advocate for local impacts of cannabis legislation** – Advocate for local control, taxation and funding for addressing the environmental, land use, and public safety impacts of the cultivation of cannabis.
- b. **Ensure State realignment & cost-shifts** – Continue to ensure successful implementation of the broad array of programs transferred to county jurisdiction under the 2011 Public Safety Realignment, including appropriate distribution of AB 109 funding. Support state policy changes that will allow for

greater administrative and program flexibility for county programs associated with this shift of responsibility.

- c. **Support of rural fire districts** – The population of Mono County is highly rural and dependent upon voluntary associations that provide basic emergency services. These volunteer fire districts provide services to residents and tourists, and they are often the first responders to accidents. Support relief for rural fire districts.
- d. **Advocate for Community Paramedicine** – Advocate for the State Emergency Medical Services Agency (EMSA) to expand the current number of EMS Programs participating in the Community Paramedicine Demonstration Project.
- e. **Support elimination of Juvenile Housing Fees** – Support proposals to eliminate the fee paid by counties to house juveniles at the Division of Juvenile Facilities. The fee is currently \$24,000 per juvenile committed and counties are not funded for this.

## 5. Transportation and Infrastructure

- a. **Support action for transportation funding** – Support the multiple transportation funding sources that provide for improved transportation systems and multimodal networks, including SB 1 as enacted and delivery of projects that rehabilitate and improve local roads and related infrastructure.
- b. **Support State highway access** – Mono County supports budget policy and legislation to fund rehabilitation of the Bodie Road (Highway 270) that provides access to Bodie State Park and to facilitate early Sierra Pass openings (including Highways 120 and 108).
- c. **Support complete streets and walkable community principles** – Mono County is a strong supporter and advocate of the complete streets and walkable community principles in the 2040 California Transportation Plan. This focus is a transportation paradigm and culture shift that will impact projects from initiation to completion and maintenance. Recently, local jurisdictions have been increasingly tasked with the funding and maintenance of complete street features on state facilities such as state highways. These responsibilities lie with the state, and a corresponding shift in the functioning and funding of Caltrans is needed to ensure success.
- d. **Support continued rural broadband deployment and telecommunications improvements through local, State, and Federal policy advocacy, infrastructure**

**projects, and grant programs** – Having appropriate policy at the local, State, and Federal levels is imperative to ensure adequate communications connectivity – which is a critical part of public safety and economic development. Because Mono County has dedicated resources to improve access to high-quality broadband in our communities and as a result of the completion of the Digital 395 project, roughly 90% of our households have access to Gigabit internet. Unfortunately, several Mono County communities and residents still face barriers to connectivity as there is inadequate infrastructure to support basic Plain Old Telephone Service (POTS) telephone service, let-alone high-speed Internet. In order to improve the landscape, the County should advocate for:

- i. Policies, regulations, and enforcement around providers delivering basic POTS services to all locations desiring this service;
- ii. Appropriate and effective definitions of ‘broadband’ which recognize the importance of technology and dependence on the internet for public safety and economic development;
- iii. Legislation and associated programs that provide funding for broadband infrastructure projects and adoption/education efforts;
- iv. Programs and efforts that move to improve the accuracy of metrics used to represent the current state of broadband in Mono County.

## **6. Administrative and Fiscal Services**

- a. **Support Clerk/Recorder Services and Elections Administration improvements** – Support resources for improving county record keeping services and election administration, and monitor legislation that may impact the following:
  - i. Recording fees and process, and recorded documents;
  - ii. Vital statistic fees and process;
  - iii. Public records;
  - iv. Unfunded mandates;
  - v. Vote-by-mail, voter registration, election management systems, elections process, and election equipment;
  - vi. Funding for records preservation (such as Board of Supervisors historic records);
  - vii. Funding for modernization of elections equipment;
- b. **Support Vote-by-mail legislation** – Support legislation to authorize vote-by-mail ballot elections for rural counties.
- c. **Support the full funding of all Payment In Lieu of Taxes (PILT)** – Support legislation and budget efforts that provide for payment of past due balances and continue to maximize the PILT revenue to counties and maintain full funding of PILT without restrictions beyond the current authorization.

- d. **Oppose legislation that would limit and/or impose significant procedural or substantive barriers to counties' ability to contract for services.**
- e. **Pursue county line adjustments with Madera and Inyo.**

## 7. Health and Human Services

- a. **Ensure State and Federal Healthcare Reform has equitable funding formulas for rural counties** – Affordable Care Act (ACA) implementation began in 2014, and it is vital that local government funding streams reflect equitable distribution formulas to service our rural constituents. Securing adequate funding to sustain health care reform measures is important to Mono County. Key issues include Medi-Cal expansion and funding for these mandates and continuation of 1991 realignment allocation/amounts.
- b. **Advocate for a level of funding that enables counties to properly administer the Medi-Cal program on the state's behalf.**
- c. **Support improvements to Medi-Cal** – Support the streamlining of the Medi-Cal administration and improve access to health coverage for uninsured families.
- d. **Support measures that establish full and continued State and federal funding of the IHSS program** and continuance of the Maintenance of Effort funding structure.
- e. **Support a funding methodology and assumptions that enable counties to properly administer the In-Home Supportive Services program** on the state's behalf.
- f. **Support county implementation of the Continuum of Care Reform** – Support adequate funding for county implementation of the Continuum of Care Reform including continued funding for the Foster Parent Recruitment, Retention, and support fund administered through local child welfare services (CWS) agencies that are dedicated to the recruitment, retention, and support of resource families so that they may provide stable, loving homes for children in the foster care system.
- g. **Support State and Federal laws that support affordable housing** and broaden the opportunities for local, non-profit housing entities and instrumentalities of government to increase homeownership. In addition, support increased

financing, subsidy options, and tax incentives to support development of new, affordable housing units.

## 8. Economic Development

- a. **Support new and current business development** – Support legislation and programs that support economic development efforts that augment and promote business retention and expansion, as well as create an environment conducive to new business attraction.
- b. **Support of commercial filming** – Support bills and initiatives to attract and retain film production in the state as increased filming statewide will result in commercial opportunities for commercial filming projects in Mono County.
- c. **Support tourism and recreation economy** – Support legislation that serves to strengthen the tourism and recreation economy, particularly in the shoulder season (spring and fall).

## Federal Priorities

1. **Support Funding/Program Preservation** – Support legislative, regulatory, and budget efforts that protect and/or enhance local government revenues, maximize the County’s access to federal funding sources, and/or increase local funding flexibility. Oppose legislative and administrative actions that would create federal unfunded mandates and/or preempt local decision-making authority.
  - a. **Support full funding of the Secure Rural Schools program** – These funds are critical to Mono County as they provide funding for Mono County Office of Education programs as well as supporting road maintenance to ensure students can get to and from school on County roads.
  - b. **Support the full funding of all Payment in Lieu of Taxes (PILT)** – Support legislation and budget efforts that continue to maximize the PILT revenue to counties and continue full funding of PILT without restrictions beyond the current authorization.
  - c. **Support federal funding for Housing and Economic Development programs** – Support the highest possible funding level for key federal housing and economic development programs, including the Community Development Block Grant (CDBG).
    - a. **Support continued rural broadband deployment and telecommunications improvements through local, State, and Federal policy advocacy, infrastructure projects, and grant programs** – Having appropriate policy at the local, State, and Federal levels is imperative to ensure adequate communications connectivity – which is a critical part of public safety and economic development. Because Mono County has dedicated resources to improve access to high-quality broadband in our communities and as a result of the completion of the Digital 395 project, roughly 90% of our households have access to Gigabit internet. Unfortunately, several Mono County communities and residents still face barriers to connectivity as there is inadequate infrastructure to support basic Plain Old Telephone Service (POTS) telephone service, including cellular phone service, let-alone high-speed Internet. In order to improve the landscape, the County should advocate for:
      - i. Policies, regulations, and enforcement around providers delivering basic POTS services to all locations desiring this service;
      - ii. Appropriate and effective definitions of ‘broadband’ which recognize the importance of technology and dependence on the internet for public safety and economic development;

- iii. Legislation and associated programs that provide funding for broadband infrastructure projects and adoption/education efforts; Programs and efforts that move to improve the accuracy of metrics used to represent the current state of broadband in Mono County
  - d. **Support legislation that promotes, protects, or facilitates the sustainability of our local agriculture** – Mono County agriculture is an important local economic driver, provides jobs, puts food on the table and contributes to the open-space landscape that draws visitors.
  - e. **Support Economic Development resources** –
    - i. Support legislation and federal programs that provide access to small business capital for local business development through the Small Business Administration, Small Business Development Corporation and other government loan and financial programs.
    - ii. Support legislation and federal programs that promote locally-based business retention and expansion, as well as create an environment conducive to new business attraction.
    - iii. Support initiatives to attract commercial filming opportunities to the region: in particular, budgetary allocations that increase capacity for processing special use permits on the Inyo and Humboldt Toiyabe National Forests.
    - iv. Support bills, initiatives and programs that strengthen the tourism and recreation economy.
2. **Natural Resources, Public Lands, and Agriculture** – Support legislation that promotes agriculture and that protects the County’s quality of life, its diverse natural resources, and preserves the essence and history of the County, along with legislation that provides adequate funding for stewardship of our public lands.
- a. **Support sustainable funding for federal public lands** – Support measures to sustain our federal lands. Closure or underfunding of these lands managed by the US Forest Service, Bureau of Land Management and National Park Service would result in a significant negative impact to our county as tourism and recreation are our economic drivers.
  - b. **Support outdoor recreation economy and public lands** – Support the enacted 2016 Outdoor Recreation and Jobs Act and the effort to measure the outdoor recreation economy’s contribution to the US Gross Domestic Product. Once the federal government fully understands the economic benefits of outdoor recreation, land management agencies and local governments will have necessary data to measure the impact of the recreation economy and the key



role that sustainable recreation needs to play in the management decisions of public lands agencies.

- c. **Support special designations** – Support special use designations for public lands such as National Scenic Areas, Wild & Scenic Rivers, Wilderness, National Monuments, National Conservation Areas, when demonstrated conservation values and public support warrant such designations.
- d. **Oppose public lands disposal** – Oppose the large-scale sale, transfer or "disposal" of public lands except for strategic, widely supported transfers or exchanges for management and boundary adjustments with demonstrated public benefit.
- e. **Support wildfire funding and fuels reduction** – Support legislation to change the method of funding wildfire suppression on National Forests by providing access to funding outside of the statutory discretionary limits for emergency purposes and for investment in additional resources for forest management/fuels reduction that addresses California's tree mortality crisis.
- f. **Support public land infrastructure** – Support increased funding for public land management agencies to address deferred maintenance of infrastructure in forests, national parks and reserves that rural counties depend on for tourism and recreation based economies.
- g. **Support land management directives** – Support Mono County's tourism and recreation economy by ensuring funding, programs, and management directives for federal land agencies (including the Land & Water Conservation Fund) that facilitate the planning, building, and maintenance of infrastructure for sustainable recreation, travel, and commercial film permitting on public lands.
- h. **Support sustainable fishing** – Support the funding of efforts to enhance the fish population in Mono County including sustainable fishing, ongoing fish stocking, education for proper catch and release practices, protection of spawning waterways, and support of the California Department of Fish and Wildlife stocking of diploid trout in allowable waters.
- i. **Support the control of invasive species** – Support control and mitigation for the spread of invasive species to protect, conserve, and restore public and private lands.
- j. **Support biomass project development** – Support legislation that encourages the US Forest Service (USFS) and Bureau of Land Management (BLM) to continue actively promoting and assisting with biomass project development.

- k. **Support alternative energy** –
  - i. Support local efforts to develop renewable, distributed energy sources including but not limited to environmentally and appropriately scaled biomass, solar, and wind, while ensuring projects and their supporting infrastructure (i.e. transmission lines, pipes lines, towers, service roads) does not degrade the County’s quality of life, natural or visual resources, water or essence and history.
  - ii. Continue to support geothermal power production that is environmentally sustainable and doesn’t negatively affect local domestic water supplies.
  
- l. **Support Devils Postpile National Monument legislative requests** – Support legislation to authorize a boundary adjustment request, and to designate a portion of the Middle Fork San Joaquin River as Wild & Scenic, as described in Devils Postpile National Monuments 2015 Management Plan.
  
- m. **Support endangered species regulation** – Support a balanced approach to the implementation of endangered species regulation with impacts to the rural economy and communities of Mono County. Mono County is fortunate to have a rich natural heritage that should be conserved, and it supports the need to protect and recover imperiled species. These conservation measures must be weighed and balanced against impacts to the fragile tourism and recreation-based rural economy and local communities, and every effort must be made to protect private property rights and avoid detrimental impacts to county residents.
  
- n. **Support sage grouse conservation** – Ensure funding commitments are met and honored by federal agencies, and support continued participation in the collaborative process to address Bi-State Sage Grouse conservation efforts.

### 3. **Public Safety and Criminal Justice**

- a. **Support full funding of Byrne Justice Assistance Grants** – Support the preservation of funding levels for existing safety programs such as the Byrne Justice Grant (Byrne/JAG) Program and oppose efforts to reduce or divert funding away from these programs.
  
- b. **Support continued funding of FEMA’s Assistance to Firefighters Grant (AFG) program** – Support continued funding to enhance the safety of the public and firefighters with respect to fire-related hazards by providing direct financial assistance to eligible fire departments, nonaffiliated Emergency Medical Services organizations, and State Fire Training Academies. This funding is for critically

needed resources to equip and train emergency personnel to recognized standards, enhance operations efficiencies, foster interoperability, and support community resilience.

- c. **Support legislation that resolves the conflict federal statutes have with legalization of recreational cannabis use in California** – ideally, this includes removing cannabis as a schedule 1 drug and providing cannabis businesses with access to business banking services by changing federal banking access laws. Barring a legislative solution by Congress, the County supports reinstatement of the concepts stated in the Cole Memo that allows commercial cannabis activities to operate free and clear of federal enforcement interference so long as the County has a robust regulatory framework in place.
- d. **Urge common-sense gun safety legislation**

#### 4. Transportation and Infrastructure

- a. **Ensure that federal transportation formulas support rural road infrastructure** – Mono County has concerns regarding the continued implementation of the federal surface transportation reauthorization program. Mono County relies on the network of state highways and locally maintained roads to link residents to essential services. Transportation funding formulas should provide funding protections or guarantees for California’s rural transportation system and reflect that rural counties lack viable means to fund larger projects that provide statewide benefit. We should advocate for formulas that distribute federal funds to support local transportation priorities.
- b. **Support efforts to protect the Highway Trust Fund** and support programs that provide funding for local roads, bridges, and transit initiatives including pedestrian and bicycle systems, and other multi-modal transportation programs.
- c. **Support federal highway access** – Mono County supports budget policy and legislation that funds infrastructure such as roads on federal land with access to popular destinations including national parks and monuments.
- d. **Support Yosemite Area Regional Transportation and Eastern Sierra Transit Authority funding** – Support efforts to seek sustainable funding for regional public transportation to Yosemite National Park, other National Parks in our region, and other public lands destinations throughout the Eastern Sierra.

## 5. Health Care Reform

- a. **Oppose legislation to repeal the Affordable Care Act (ACA)** – Work to preserve and expand the number of citizens currently receiving health insurance. Oppose efforts to reduce benefits and block grants or other actions that would shift the current federal/state cost and responsibility to the states and counties.
  - b. **Ensure that Affordable Care Act (ACA) funding is maintained for local governments** – Support the Prevention and Public Health Fund of the ACA, the nation’s first dedicated mandatory funding stream for public health and prevention activities, which supports Mono County health care services to underserved residents.
  - c. **Oppose funding reductions for Medicaid** – Oppose efforts to reduce federal funding for Medicaid administration or benefits including converting to a voucher system with less federal funding.
  - d. **Oppose turning Medicaid over to States** – Oppose efforts to turn Medicaid (Medi-Cal in California) over to the states with less federal funding.
  - e. **Support full funding of the Children’s Health Insurance Program (CHIP).**
  - f. **Support funding of Veterans benefits** – Support provision and funding for current benefits and health care programs for Veterans.
6. **Child Welfare** – Support legislation that increases services and home-based placement resources to children who are victims of or at risk of: abuse, neglect, or exploitation, and provide support to caregivers of these victims.
7. **Immigration** – Oppose immigration reform efforts that would eliminate a pathway to full and equal citizenship, that would restrict the rights of immigrants or break up families, or that would focus on a mass deportation of undocumented immigrants.
8. **Oppose efforts to reduce the Supplemental Nutrition Assistance Program (SNAP)** – when Congress reauthorizes the Farm Bill in 2018. In Mono County, the Supplemental Nutrition Assistance Program (SNAP) provides over 1,400 residents with CalFresh benefits.

9. **Support the Older Americans Act (OAA)** – and increased federal funding for the OAA programs. The Act established a national network of Area Agencies on Aging (AAA) which oversee a variety of social services for seniors, including nutrition, elder abuse prevention, legal services and advocacy, and caregiver resources. The OAA is not adequately funded and does not reflect the need for senior services or the population growth of people over age 60. With the limited state funding to support California’s AAAs programs, it is critical that the federal funding expand to support senior services.



# MONO COUNTY

CALIFORNIA'S EASTERN SIERRA



Lundy Canyon

## HIDDEN TREASURES IN PLAIN SIGHT

**MONO COUNTY** is a land of dramatic mountain backdrops, high plains, and countless clear lakes, streams, and rivers. Over 3,000 square miles in size, Mono County is well-known for its vast scenic and recreational resources. Much of this land is contained in the Inyo and Toiyabe National Forests, and the Ansel Adams, John Muir, and Hoover wilderness areas. Access to hiking, fishing, biking, skiing, horseback riding, fall colors, uncrowded campgrounds, amazing music festivals, and much more is found just off of scenic US 395, which stretches the length of the county, 120 spectacular miles from Bishop, California, to the Nevada border.

## TOP ATTRACTIONS

**YOSEMITE NATIONAL PARK** – Drive California's highest pass – just 12 miles from Lee Vining to Yosemite's east entrance – to witness ten-story waterfalls, enjoy world-class rock climbing and hiking, and more (summer only).

Contact: [www.nps.gov/yose](http://www.nps.gov/yose) or 209-372-0200. For bus service: [www.Yarts.com](http://www.Yarts.com).

**BODIE STATE HISTORIC PARK** – Bodie is preserved in a state of "arrested-decay," so keep an eye out for spirits roaming the once-wild streets of this genuine gold-mining ghost town.

Contact: [www.parks.ca.gov](http://www.parks.ca.gov) or [www.BodieFoundation.org](http://www.BodieFoundation.org) or 760-647-6445.

**MONO LAKE** – Paddle a canoe around volcanic islands (don't worry, they're dormant!) and tufa towers, which are natural limestone formations created by the ancient lake's salinity.

Learn more at Mono Basin Scenic Area Visitor Center, 760-647-3044, or the Mono Lake Committee, [www.MonoLake.org](http://www.MonoLake.org) or 760-647-6595.

**DEVILS POSTPILE NATIONAL MONUMENT** – Located near Mammoth Lakes, Devils Postpile is the world's finest example of columnar basalt formations: 760-924-5500.

### Mono County Tourism

Alicia Vennos

[avennos@mono.ca.gov](mailto:avennos@mono.ca.gov)

1-800-845-7922

760-924-1743 Office

### East River PR

Katie Shaffer

[katie@eastriverpr.com](mailto:katie@eastriverpr.com)

530-214-8790 Office

530-559-5330 Cell

## MONO COUNTY Towns Communities

**BENTON HOT SPRINGS** — Soak in natural hot springs that are temperature regulated in this historic stagecoach station.

**BRIDGEPORT** — Home of the county seat, the classic whitewashed wooden courthouse has been in use since 1880. Just outside of Bridgeport, Twin Lakes, Virginia Lakes and Bridgeport Reservoir offer fishing and hiking all summer long.

**CONVICT LAKE / McGEE CREEK** — Dramatically situated under towering Mt. Morrison, Convict Lake is loved by anglers, hikers, and wedding parties! Catch wildflowers or fall colors at McGee Creek Canyon.

**CROWLEY LAKE** — Fishing season opener's home base, this expansive lake offers world-class trout fishing.

**JUNE LAKE** — Tucked away at the base of 10,909-ft. Carson Peak, June Lake is a scenic mountain hideaway. Well known for trout fishing and brilliant fall colors, the June Lake Loop is a snowy retreat in winter. June Mountain Ski Area offers free lift tickets all winter for kids age 12 and under.

**LEE VINING** — Overlooking dramatic Mono Lake, Lee Vining is the gateway town to Yosemite National Park – just 12 breathtaking miles up Tioga Pass Road.

**MAMMOTH LAKES** — Mammoth Mountain Ski Area consistently ranks as one of the top winter sports destinations in North America. In the town of Mammoth Lakes, you'll find quaint shops, gourmet restaurants and accommodations from cozy cabins to four-star luxury hotels.

**ROCK CREEK / TOM'S PLACE** — Famous for the beautiful Little Lakes Valley hiking trail, fall colors, and home-made pie.

**TOPAZ** — Home to Topaz Lake, which boasts a nine month fishing season (and big cash derby!), and a Nevada casino.

**WALKER AND COLEVILLE** — Ranch towns in the northern part of Mono County, Walker and Coleville host California's only ATV/UTV Jamboree!

## GETTING TO CALIFORNIA'S EASTERN SIERRA

### FLY TO THE EASTERN SIERRA!

Daily air service to Mammoth Yosemite Airport (MMH) is available on Alaska Airlines, United Airlines and/or JetSuiteX from Los Angeles, Burbank, San Diego and San Francisco.



### DRIVE

Mono County is within a scenic 5-7 hour drive from Los Angeles, San Francisco and Las Vegas. Northern Mono County is only 1.5 hours from Reno/Tahoe International Airport.

### DRIVING DISTANCES AND TIMES

Reno	2.5 hours	140 miles / 225 km
San Francisco	5.5 hours	250 miles / 402 km
Los Angeles	5.5 hours	330 miles / 531 km
Sacramento	4 hours	220 miles / 354 km
Las Vegas	5.5 hours	340 miles / 547 km
Yosemite Valley	2 hours	75 miles / 121 km

*All mileage and times are from Lee Vining, CA*



## VISITOR AMENITIES

**LODGING** — With more than 140 hotels, motels, bed & breakfast inns, cabins and campgrounds, Mono County has a diverse lodging base – truly everything from deluxe spa hotels to rustic cottages and scenic RV parks.

**DINING** — All that fresh air and adventure will have visitors needing fuel. There are over 100 restaurants, cafes, pubs and bakeries to choose from throughout Mono County, with options ranging from traditional comfort food to delicious ethnic cuisine and fine dining.

**SHOPPING** — If you are looking for Macy's, you won't find it in Mono County. Our shopping experience is more about bait, gloves and woolly buggers! However, with approximately 125 stores to browse through, you'll find lots of intriguing shops, art galleries with Eastern Sierra-inspired visions, and Native American crafts and western wear that will bring out everyone's inner Wild West.

**WINTER 2018** — Kids 12 and under ski and snowboard FREE all winter at June Mountain, no restrictions!

## TOP EASTERN SIERRA ACTIVITIES

### SUMMER

Hiking and Backpacking  
Fishing and Camping  
Mountain Biking and Road Cycling  
Kayaking and Canoeing  
Stand-up Paddleboarding  
Rock Climbing  
Horseback Riding  
ATVs / Off-Highway Vehicles

### WINTER

Skating and Snowboarding  
Cross Country Skiing  
Snowshoeing  
Snowmobiling  
Dog-Sledding  
Sledding and Tubing  
Ice Skating  
Ice Climbing

## 2018 EVENT HIGHLIGHTS

June Lake Winter Festival	June Lake	March 3
Mammoth Winter Biathlon	Mammoth Lakes	March 17-18
Mono Basin Bird Chautauqua	Lee Vining	June 15-17
Old-Fashioned 4th of July	Bridgeport	June 30 – July 4
How Big Is Big Fishing Derby	Walker	July 1-31
June Lake Triathlon	June Lake	July 7
Mammoth Festival of Beers & Bluesapalooza	Mammoth Lakes	August 2-5
Friends of Bodie Day	Bodie	August 11
Founder's Day Celebrations	Bridgeport	August 31 – Sept. 3
Eastern Sierra ATV/UTV Jamboree	Walker	Sept. 11-15
Bridgeport Autumn Festival & Car Show	Bridgeport	Sept. 29
Ambush at the Lake Fishing Derby	Bridgeport	Oct. 1 – Nov. 15

For the latest news, events info, FREE Visitor Guide, and Mono County Travel Blog – visit us online at [www.MonoCounty.org](http://www.MonoCounty.org) and on Facebook at [www.Facebook.com/VisitEasternSierra](https://www.Facebook.com/VisitEasternSierra).

**Elected State Representatives:**

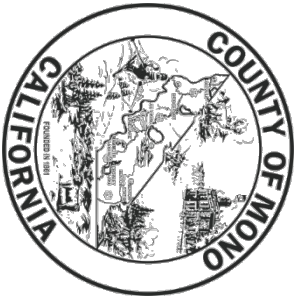
Assembly member Frank Bigelow 5 <sup>th</sup> Assembly District State Capitol, Suite #6027 Sacramento, CA 94249-0005 Phone: (916) 319-2005 Fax: (916) 319-2105 Website: <a href="https://assembly.ca.gov/assemblymembers">https://assembly.ca.gov/assemblymembers</a>	Senator Tom Berryhill 8 <sup>th</sup> Senate District State Capitol, Room 3076 Sacramento, CA 95814 Phone: (916) 651-4008 Fax: (916) 651-4908 Website: <a href="http://berryhill.cssrc.us/">http://berryhill.cssrc.us/</a>
Governor Jerry Brown c/o State Capitol, Suite 1173 Sacramento, CA 95814 Phone: (916) 445-2841 Fax: (916) 558-3160 Website: <a href="http://gov.ca.gov/Agencies/Governor-Office-of-the">http://gov.ca.gov/Agencies/Governor-Office-of-the</a>	

**Elected Congressional Representatives:**

Senator Kamala Harris United States Senate 112 Hart Senate Office Building Washington, D.C. 20510 Phone: (202) 224-3553 Fax: (202) 224-0454 Website: <a href="http://www.harris.senate.gov/">http://www.harris.senate.gov/</a>	Senator Dianne Feinstein United States Senate 331 Hart Senate Office Building Washington, D.C. 20510 Phone: (202) 224-3841 Fax: (202) 228-3954 Website: <a href="http://www.feinstein.senate.gov/">http://www.feinstein.senate.gov/</a>
Congressman Paul Cook 8 <sup>th</sup> Congressional District 1222 Longworth House Office Building Washington, DC 20515 Phone: (202) 225-5861 Fax: (909) 797-4997 Website: <a href="http://cook.house.gov/">http://cook.house.gov/</a>	







County of Mono  
Post Office Box 696  
Bridgeport, California 93517  
(760) 932-5410  
[www.mono.county.ca.gov](http://www.mono.county.ca.gov)

