

TLRR Projects Overview

The Control-Silver Peak (CSP) Project is part of Southern California Edison's (SCE) Transmission Line Rating Remediation (TLRR) Program, crossing lands managed by the Bureau of Land Management (BLM) and the Forest Service (USFS). SCE has submitted a right-of-way (ROW) application to the BLM and the USFS to remove, rebuild, and consolidate parts of the subtransmission line that do not meet current reliability standards established by the California Public Utilities Commission's (CPUC) General Order 95 and the North American Electric Reliability Corporation.

Control-Silver Peak Project Participants

The BLM California Desert District Office is serving as lead federal agency for conducting the National Environmental Policy Act (NEPA) analysis of the CSP Project. The Inyo National Forest is serving as a Cooperating Agency. An environmental contracting team, composed of North Wind Resource Consulting, LLC, and Galileo Project, LLC, are assisting the BLM in development of an Environmental Impact Statement (EIS) and project management support.

Cooperating Agencies have jurisdiction by law or special expertise to offer in the analysis process. The BLM has invited other federal agencies, state, and counties to participate as Cooperating Agencies. The BLM and FS will lead conduct government-to-government consultation to Native American Tribes pursuant to Executive Order 13175 and other policies. The BLM will consult with appropriate agencies as required by Section 7 of the Endangered Species Act (ESA) and Section 106 of the National Historic Preservation Act, as well as other entities as required by law and regulation. The BLM will work in a parallel fashion with the CPUC throughout the process, though the BLM will conduct a separate environmental analysis from the CPUC.

Control-Silver Peak Project Overview

The 60.8-mile-long CSP Project is subdivided into five segments (see Figure 1), along two existing 55 kilovolt (kV) sub-transmission lines, and four substations and a metering station associated with those lines. The proposed work would occur within new and existing ROWs, existing easements, SCE fee-owned property, and public ROWs. Work would include installing new conductors and optical ground wire, rehabilitating 65 miles of existing access roads, creating new access roads, creating staging and work areas, and removing vegetation. The proposed project consists of the following:

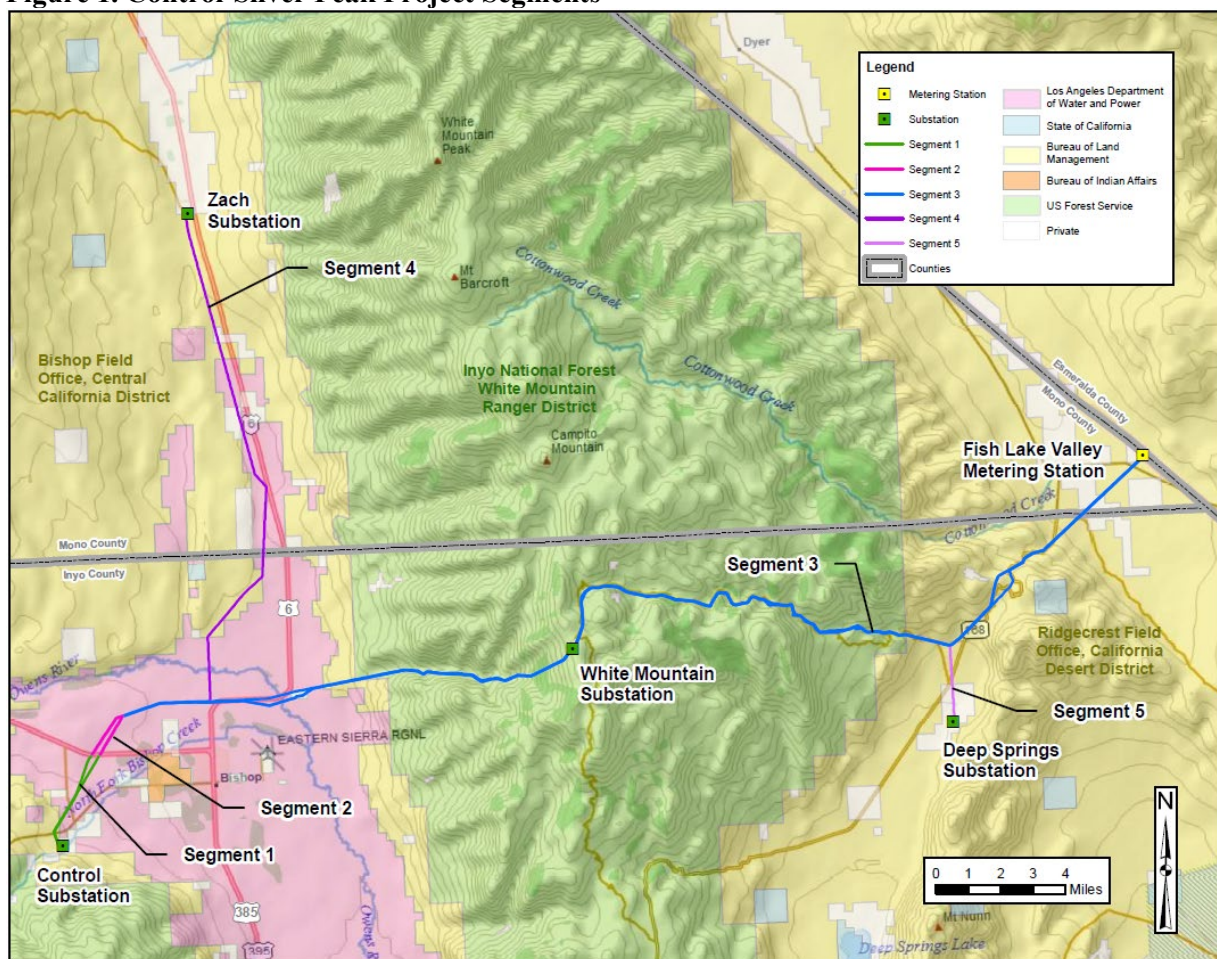
Elements Common to All Segments

- Transfer existing conductor to new poles or remove the existing conductor and install new conductor on the remaining and new poles as applicable.
- Retain distribution on some poles, lower distribution circuitry on others, or transfer distribution circuitry to replacement poles as applicable.
- Install approximately 42 miles of optical ground wire (OPGW) and/or fiber optic cable overhead on new and existing structures as applicable.
- Install system protection and telecommunications-associated equipment at existing substations and metering stations.
- Make minor modifications to existing substations to accommodate new OPGW, install new breakers, and replace existing conductors. No new substations would be built.
- Rehabilitate and grade approximately 65 miles of existing roads as needed, trim vegetation and lay mats for an estimated 7.5 miles of overland travel and develop an undetermined length of temporary access roads.

Subtransmission Pole Replacements

- No poles or structures will be installed or replaced across the 3.3 linear miles of Segment 1.
- Remove existing wood subtransmission poles and H-frames and replace with tubular steel, ductile iron, lightweight steel poles or H-frames as applicable across Segments 2, 3, and 5.
- Replace approximately 49 poles across two existing, single-circuit lines with 25, single-circuit pole lines across 1.4 linear miles of Segment 2.
- Replace about 1,508 poles across two existing single-circuit pole lines with approximately 666 double-circuit poles and 8 new single-circuit poles across the 37.5 linear miles of Segment 3.
- Replace 2 existing single-circuit wood poles with 2 single-circuit wood pole-equivalents across the 16.2 linear miles of Segment 4.
- Replace approximately 8 single-circuit poles with 8 new single-circuit wood-equivalent poles across the 2.4 linear miles of Segment 5.

Figure 1. Control-Silver Peak Project Segments



Key construction components for all segments would include:

- Staging yards 1 – 5 acres in size.
- Work areas at each pole site ranging from ¼ to ½ acre.
- Access roads, using existing roads where possible. New spur roads may be constructed.
- Vegetation removal, as needed.
- Helicopter use where site conditions and topography preclude other means of access.
- Construction personnel, approximately 100 on a given day.

The following jurisdictions would be crossed by the CSP Project:

- BLM Central California District Office (Bishop Field Office)
- BLM California Desert District Office (Ridgecrest Field Office)
- Inyo County (CA)
- Mono County (CA)
- Inyo National Forest (White Mountain Ranger District)
- Los Angeles Department of Water and Power

CSP Project Status

SCE requested in May 2020 to place the project on hold pending review their Plan of Development (POD). In April 2021, SCE reinitiated the project and submitted a revised POD. The BLM and the USFS are working together in coordinating with the Counties of Inyo and Mono, and the Los Angeles Department of Water & Power. The BLM and USFS are jointly collaborating on Section 7 ESA and Section 106 NHPA and Tribal government to government consultations. A Notice of Intent to Prepare an EIS is pending publication in the Federal Register. Several public scoping meetings are planned.

CSP Preliminary Project Schedule/Milestones (Future Dates Subject to Change)

- SCE submitted a revised application – August 2021
- SCE submitted draft Plan of Development – September 2021
- SCE submitted latest Plan of Development, Revision 5 – September 2023
- Notice of Intent published – *anticipated December 2023*
- Public Scoping – *anticipated December 2023 and January 2024*
- Draft Environmental Impact Statement Notice of Availability – *anticipated January 2025*
- Final Environmental Impact Statement Notice of Availability – *anticipated December 2025*
- Record of Decision – *anticipated December 2025*

For More Information

BLM: Joan Patrovsky, Project Manager, California Desert District, jpatrovs@blm.gov

USFS: Sheila Irons, Deputy Project Manager, Inyo National Forest, sheila.iron@usda.gov

BLM ePlanning Control Silver Peak website: <https://bit.ly/44zSlgq>