



WILLOW RD



ANOTHER VIEW OF CONTAINER SHIELDING VIEW OF FUEL TANKS  
FOR FIRE ENGINES.

(NOT TO SCALE BUT CLOSE)



CONTAINER WILL BE PLACED TO LEAVE PLENTY OF ROOM FOR  
MONO COUNTY SNOW REMOVAL EQUIPMENT TO PARK AND MONO COUNTY  
FUEL TANK. (NOT TO SCALE BUT CLOSE)



CONTAINER WILL BLOCK VIEW OF FUEL TANKS FOR FIRE ENGINES  
TO NEARBY NEIGHBORS.

(CONTAINER NOT TO SEPARATE BUT CLOSE)



VIEW OF CONTAINER LOOKING SOUTH.

(CONTAINER NOT TO SCALE BUT CLOSE)



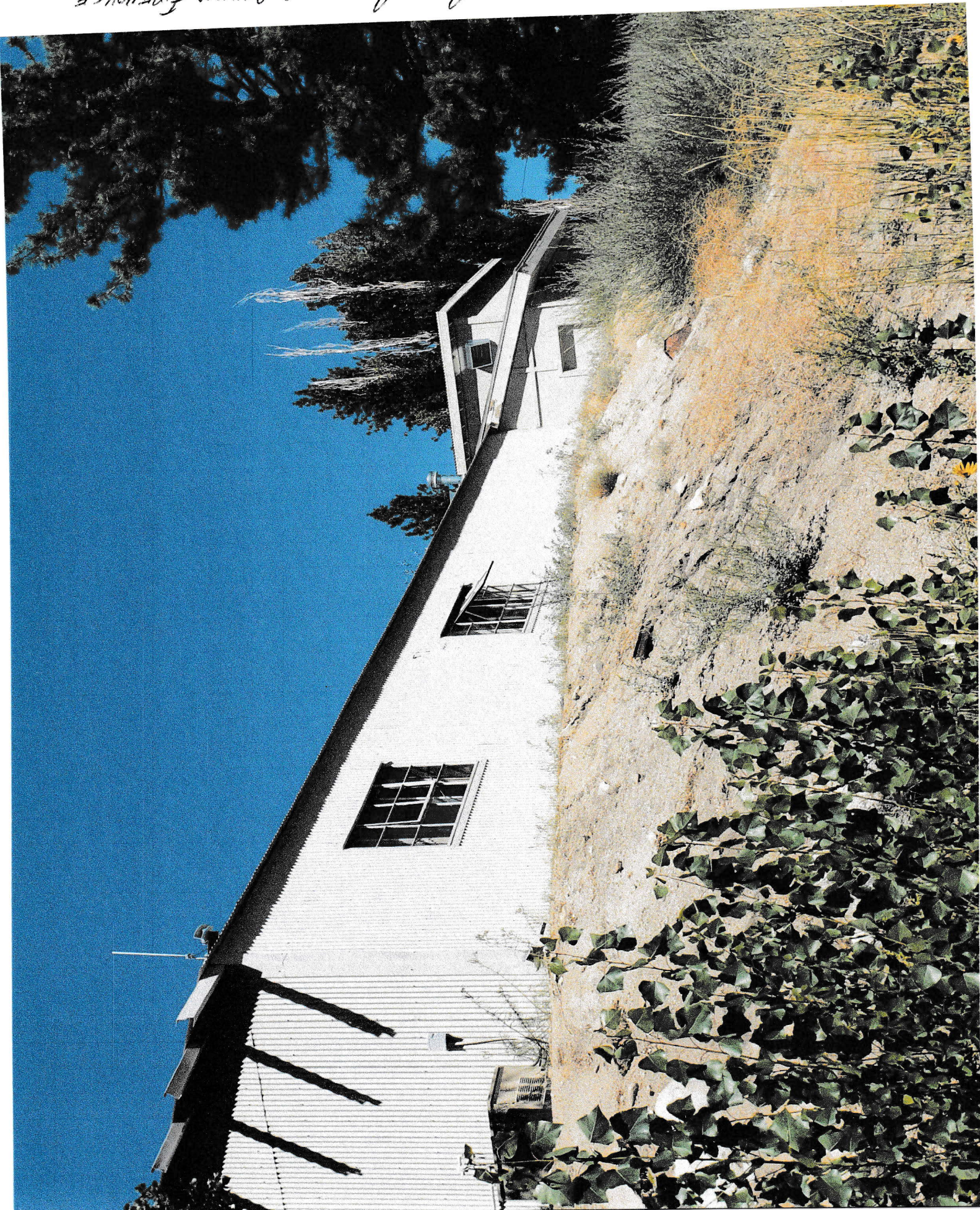
BOOTHING WILL BUFFER MUCH OF NOISE FROM ENGINES AND TRAINING  
FROM NEIGHBORS ON OTHERSIDE,

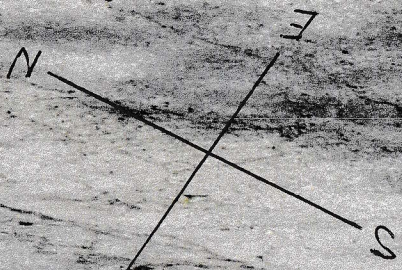
(BOOTHING NOT TO SCALE BUT CLOSE)



1933

UNABLE TO PLACE LARGE COLUMNEN BEHIND FIREHOUSE





TREHOUSE



BOULDER LOCATION

Willow Rd

US 93

93

93

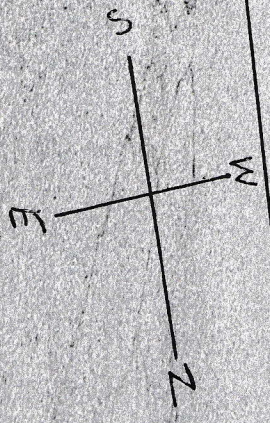




Willow Rd

NEIGHBORS SHED

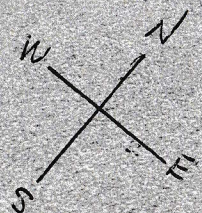
(FIND HOUSE)  
↓





WILLOW ROAD

FIREHOUSE





WILLOW RD

FIRE HOUSE

